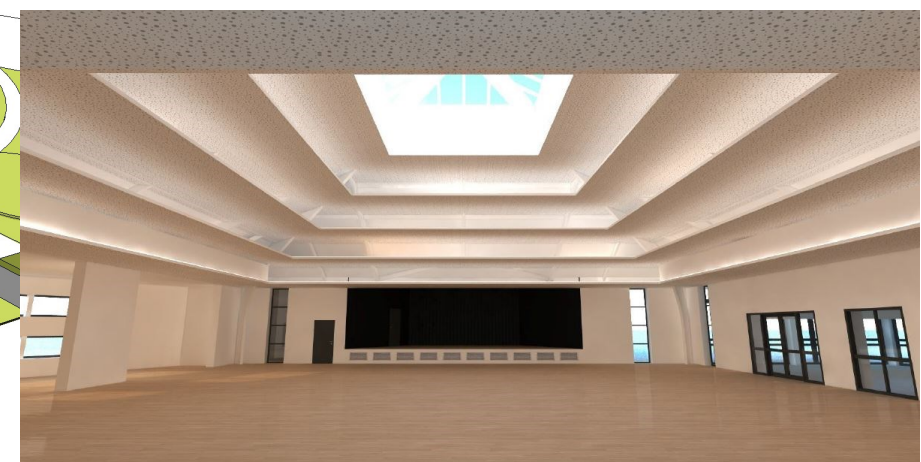
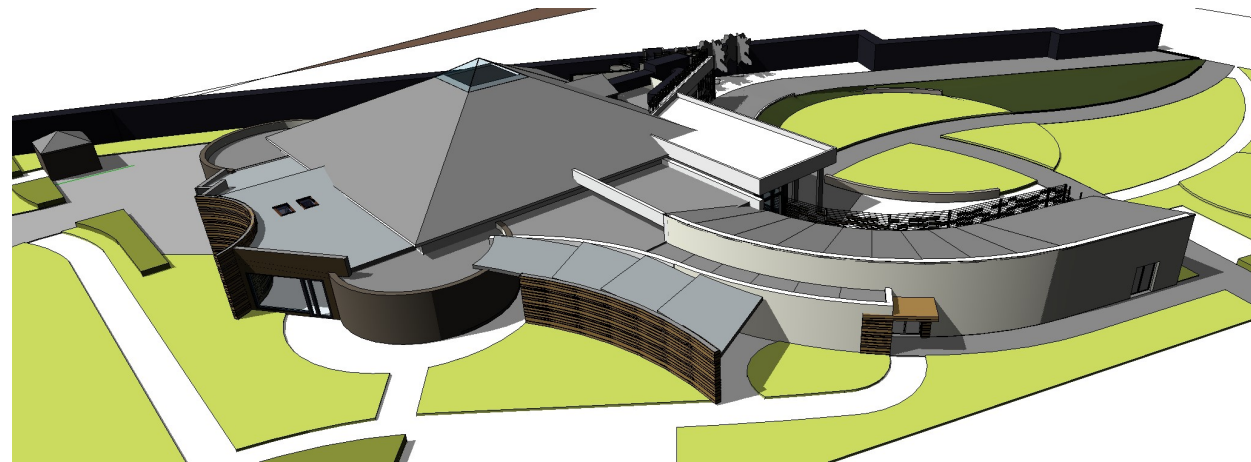
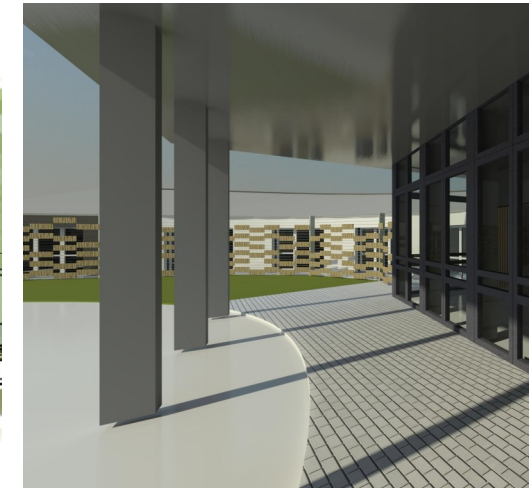
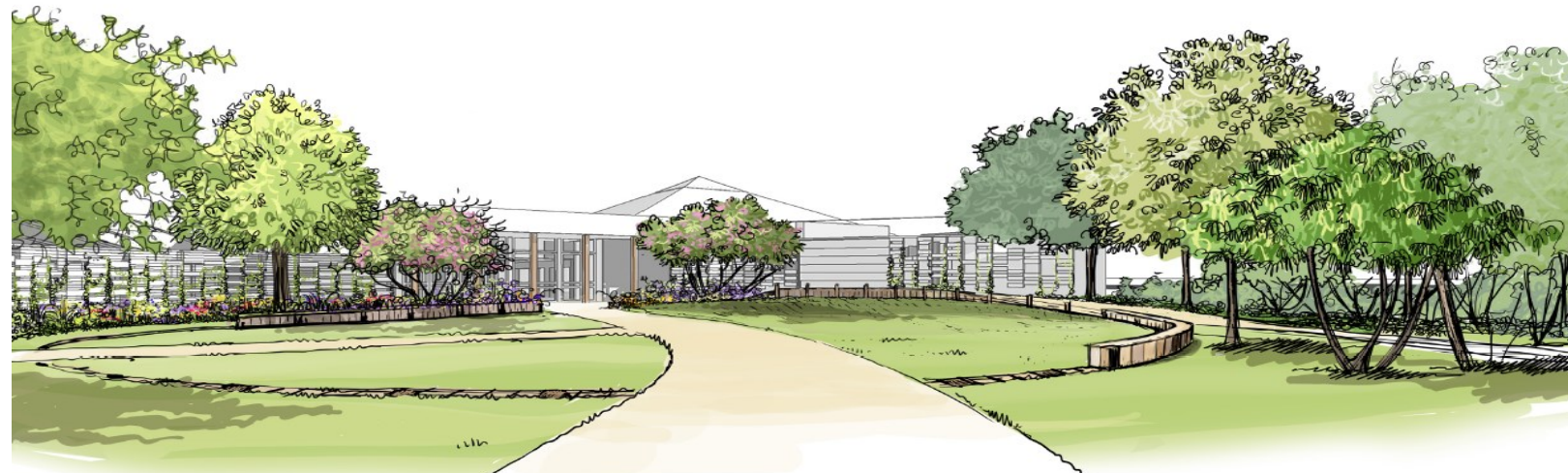




Années 2010-2024

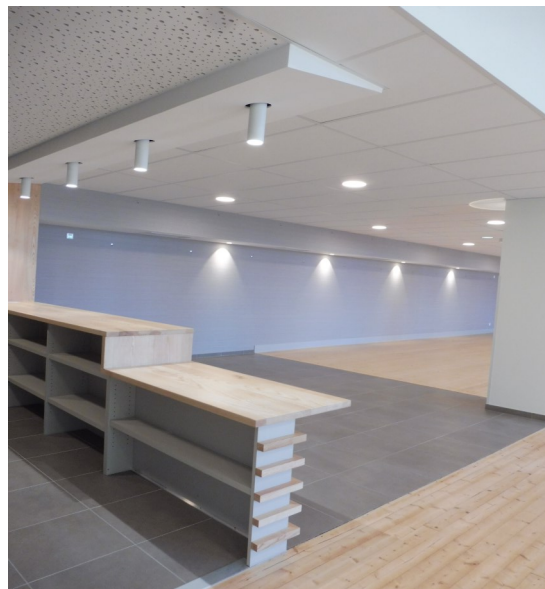
Livret de Références

En cours



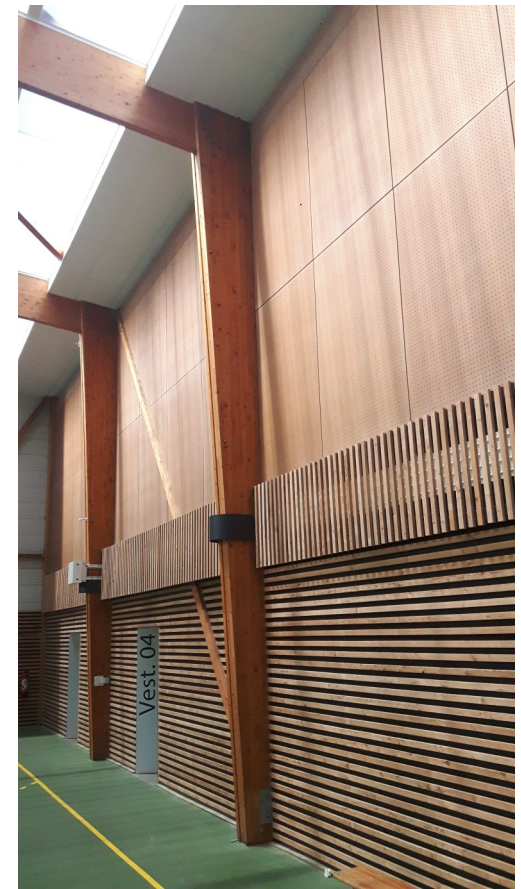
Bâtiment Public

Mairie de Montsûrs — Salle Socio-Culturelle - Extension-Restructuration



Bâtiment Public

Mairie de Saint-Christophe-du-Luat — Salle Socio-Culturelle (Ecole Jules Ferry)



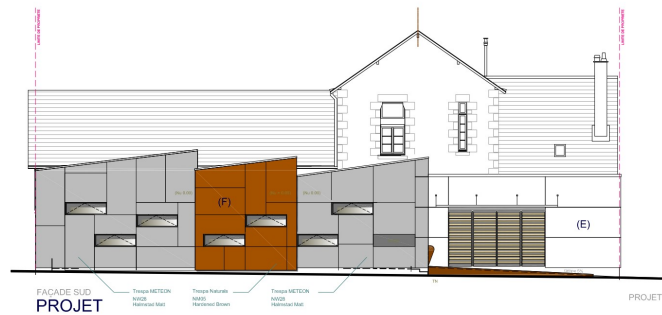
Equipement Sportif

Mairie de Saint-Pierre des Landes — Amélioration Thermique et Acoustique



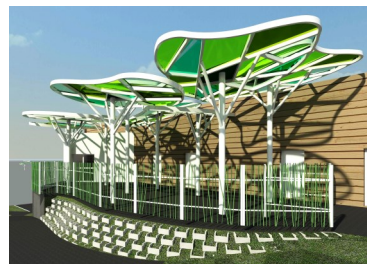
Equipement Sportif

Mairie d'EVRON — Boulodrome



Bâtiment Scolaire

Mairie de Beaulieu-sur-Oudon — Extension—Restructuration de l'Ecole Elémentaire



Bâtiment Scolaire

Commune de La Baconnière — Création d'un Préau 1/2 Pension



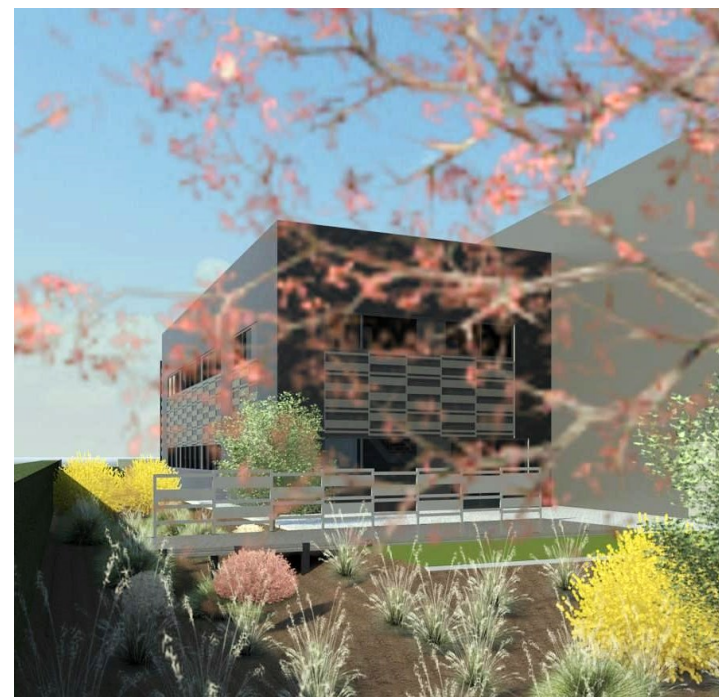
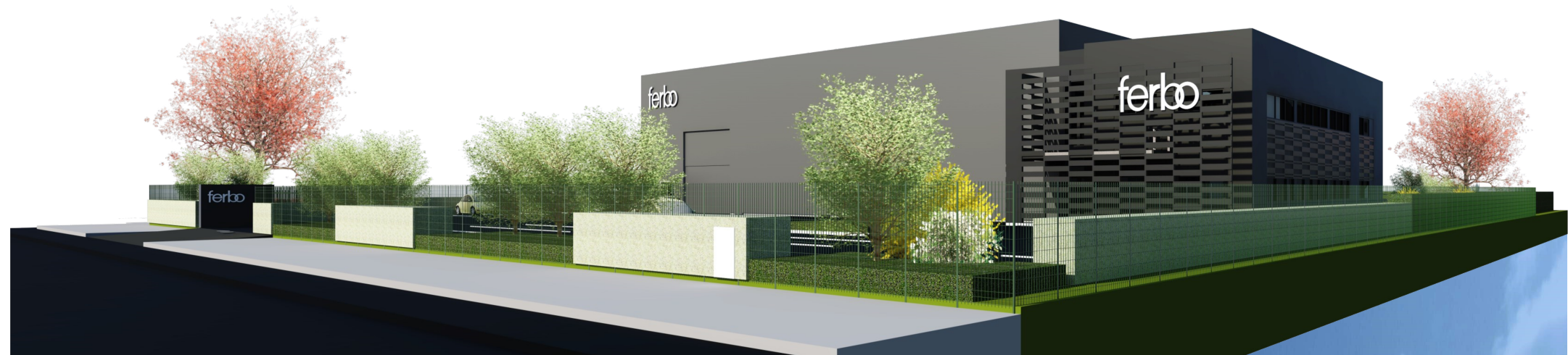
Bâtiment Scolaire

Laval Agglomération—Restructuration-Extension d'un Centre de Formation



Bâtiment Technique

Conseil Départemental de La Mayenne — Unité d'Exploitation Routière



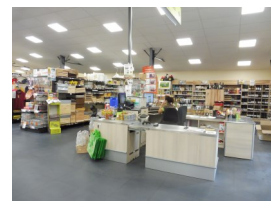
Bâtiment Artisanal et Tertiaire

Atelier de Serrurerie à Lieusaint – Ecoquartier d'Activités



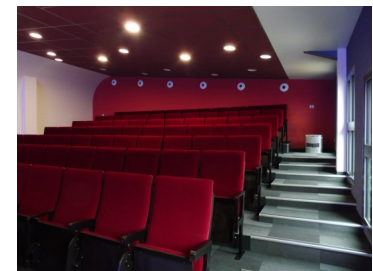
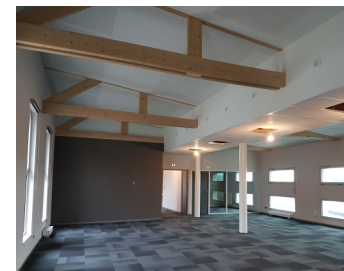
Bâtiment d'Activité

Office Publique d'Aménagement — Restructuration d'une Friche Industrielle—Cellules Artisanales



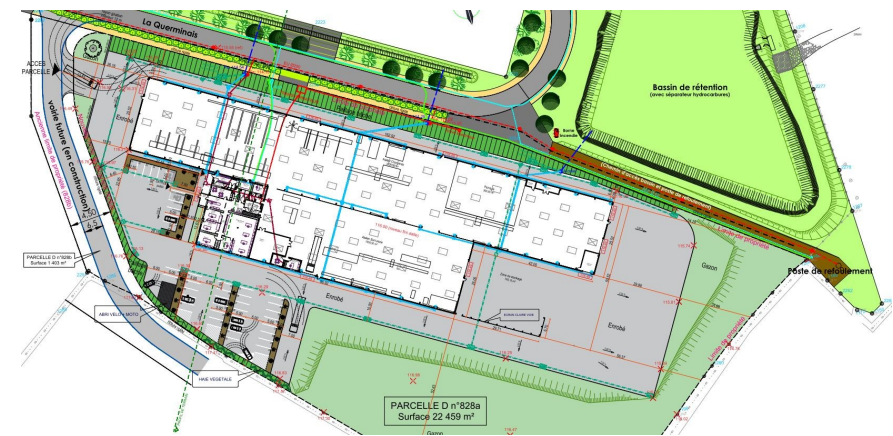
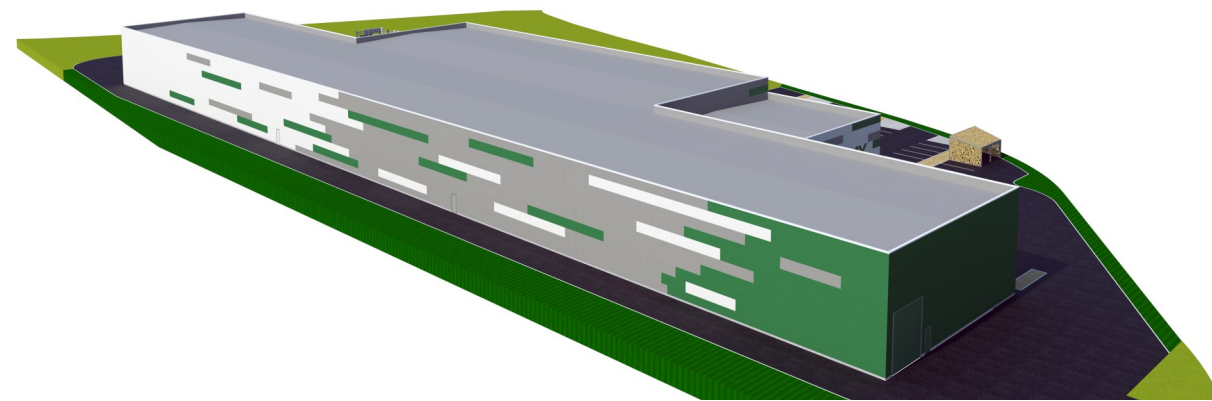
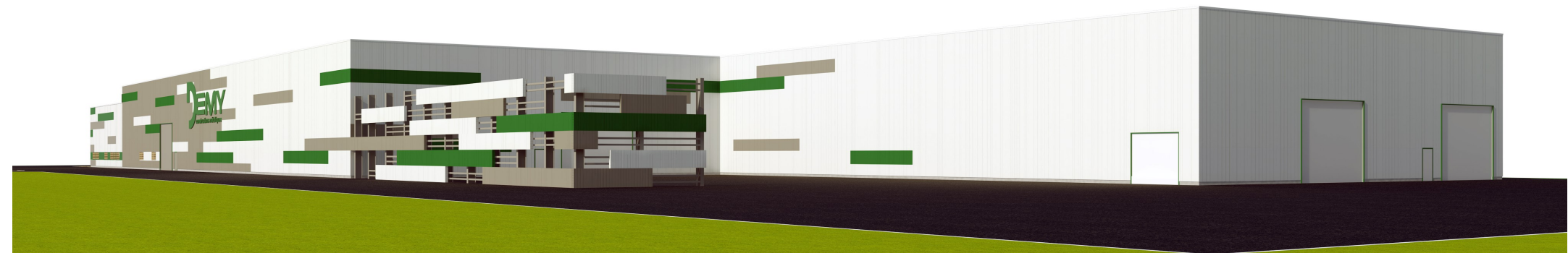
Bâtiment Commercial

Coopérative Agricole — Restructuration—Extension



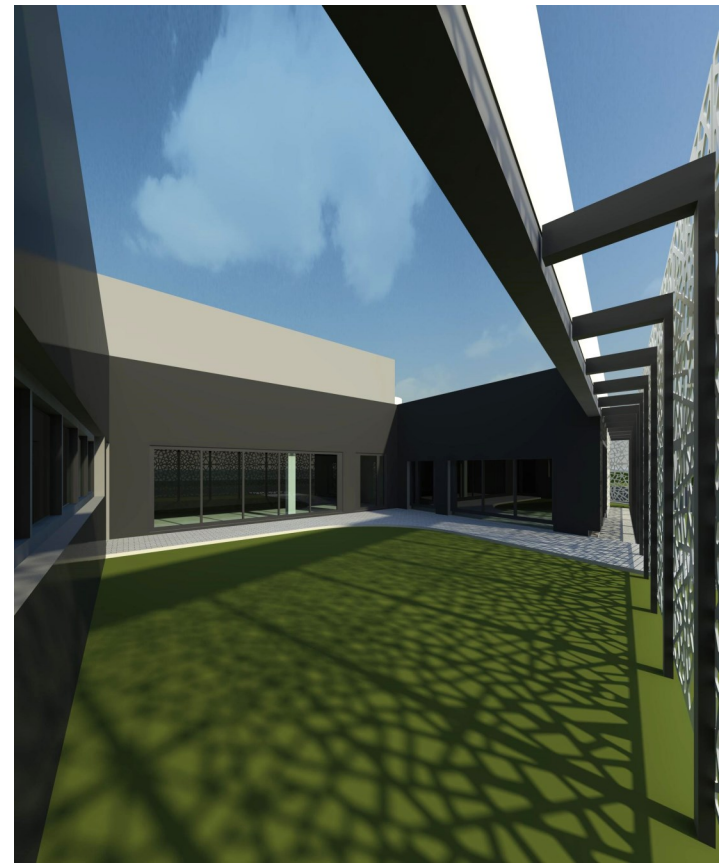
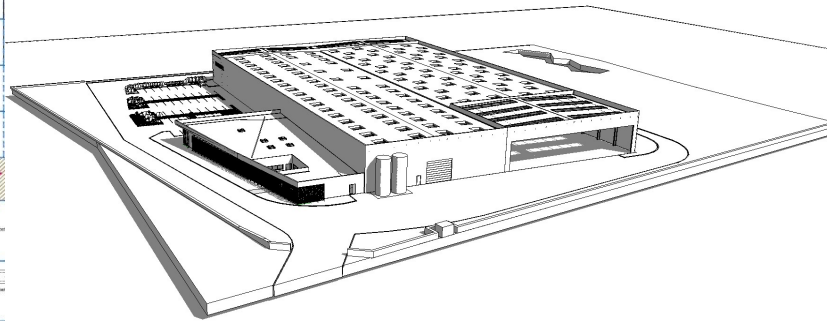
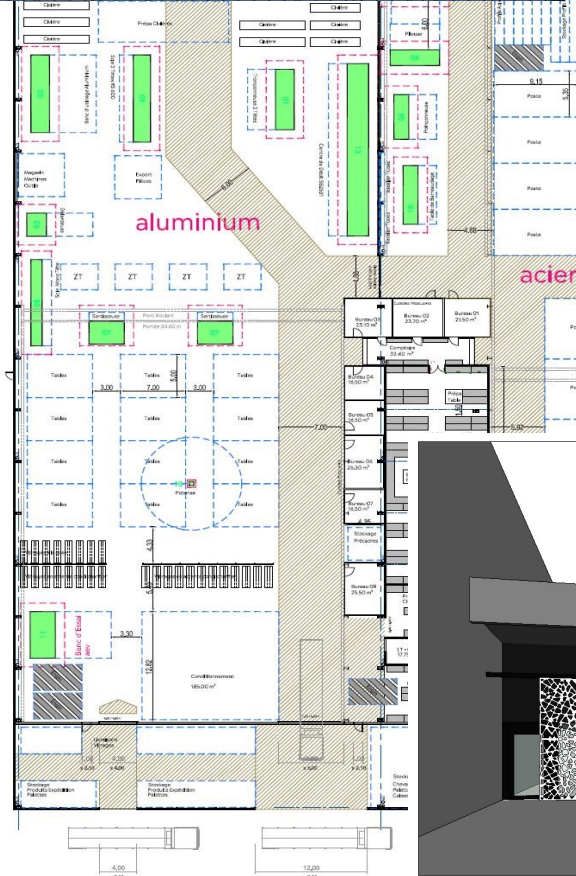
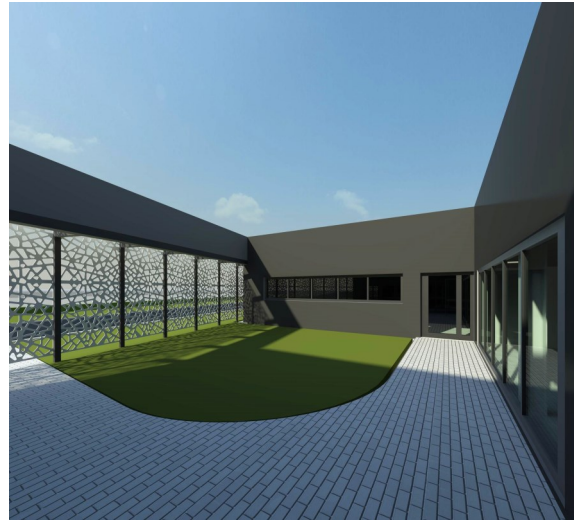
Bâtiment Tertiaire

Cabinet Comptable - Siège Social - Extension - Restructuration



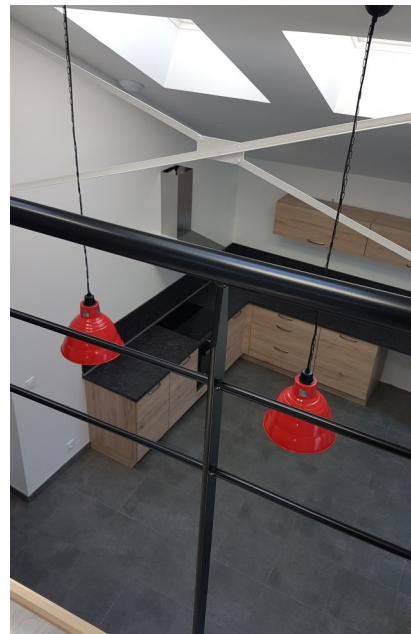
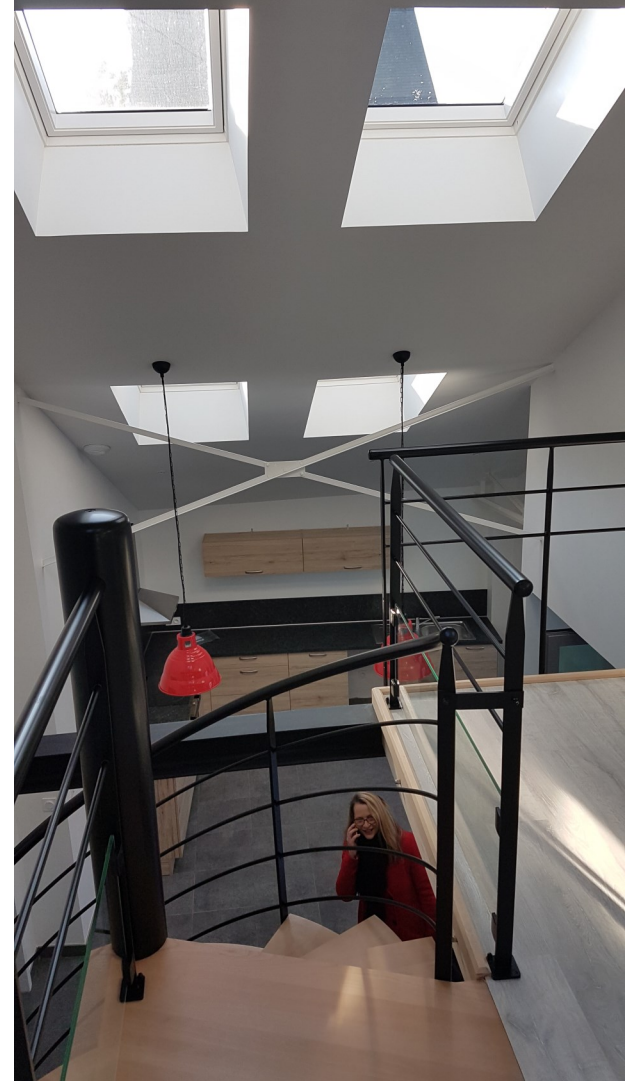
Bâtiment Industriel

Ateliers Charpentes Métalliques et Serrurerie



Bâtiment Industriel

Siège Social—Menuiserie Aluminium—Serrurerie



Logements Locatifs

Investisseur Privé — Restructuration d'une Friche Artisanale



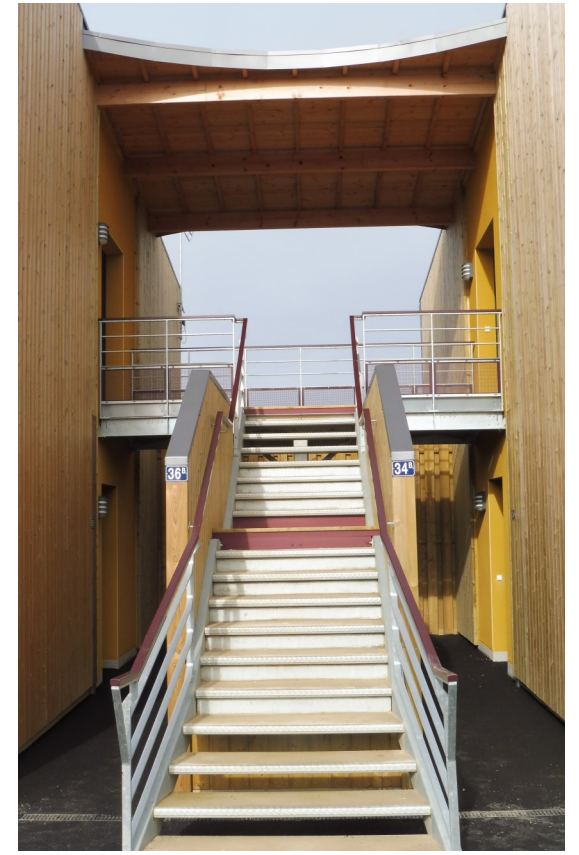
Résidence Le Haut Rocher

Syndicat des Copropriétaires — Restructuration des Balcons—Amélioration Thermique



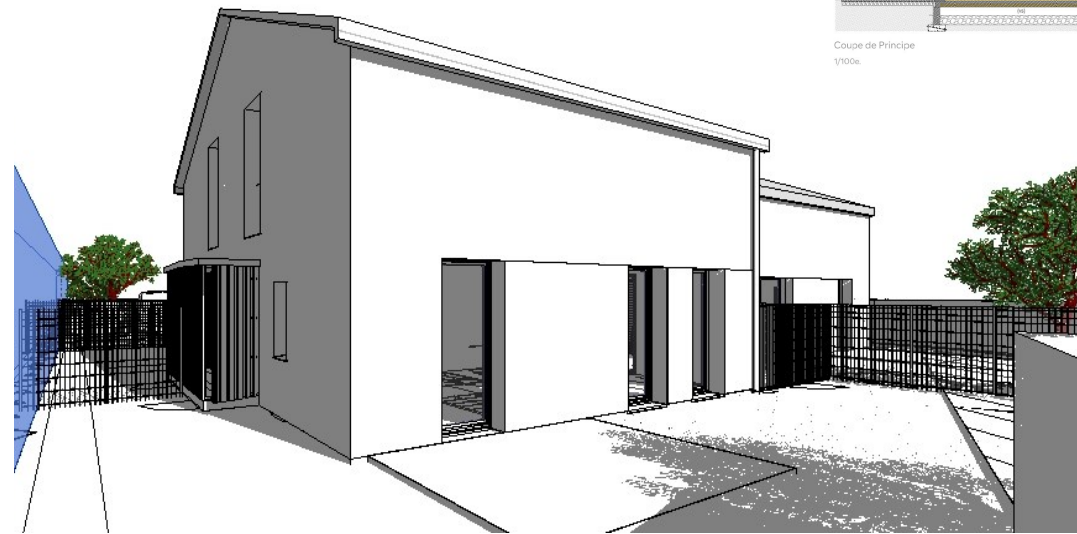
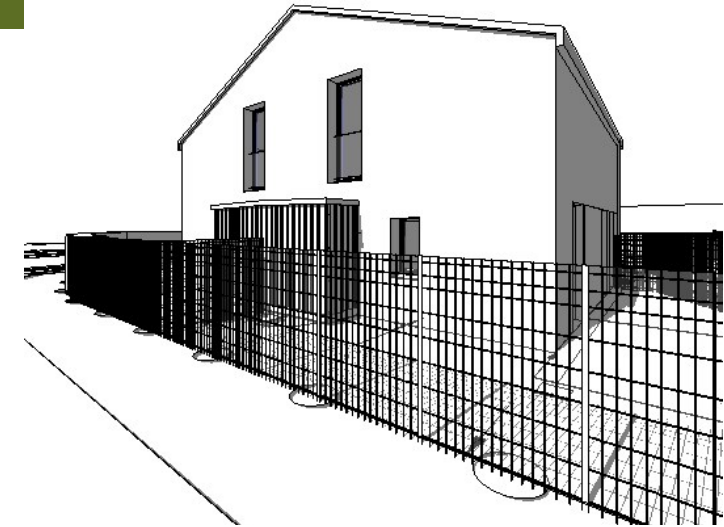
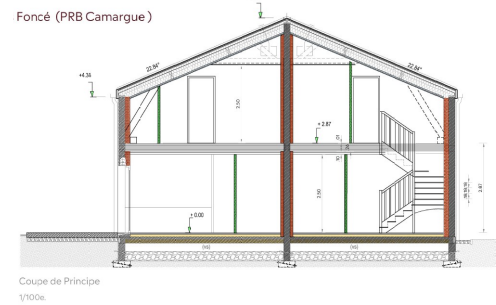
Résidence Notre Dame

PODELIHA — Amélioration des Logements et Parties Communes



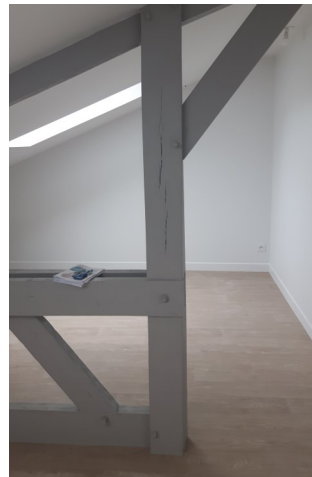
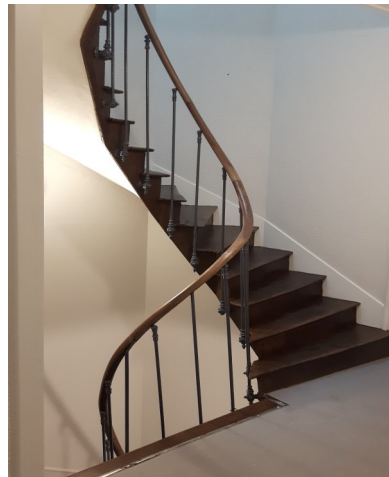
Logement Social Locatif

Bailleur Social — Semi-Collectif RT2012



Logement Social Locatif

Bailleur Social — 4 Logements Semi-Groupés RE2020



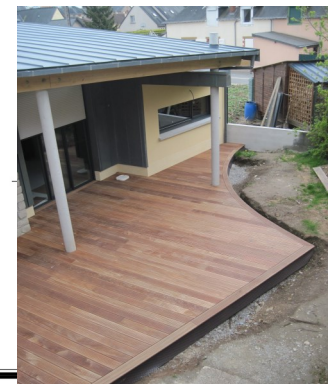
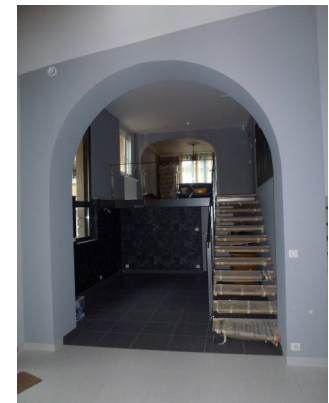
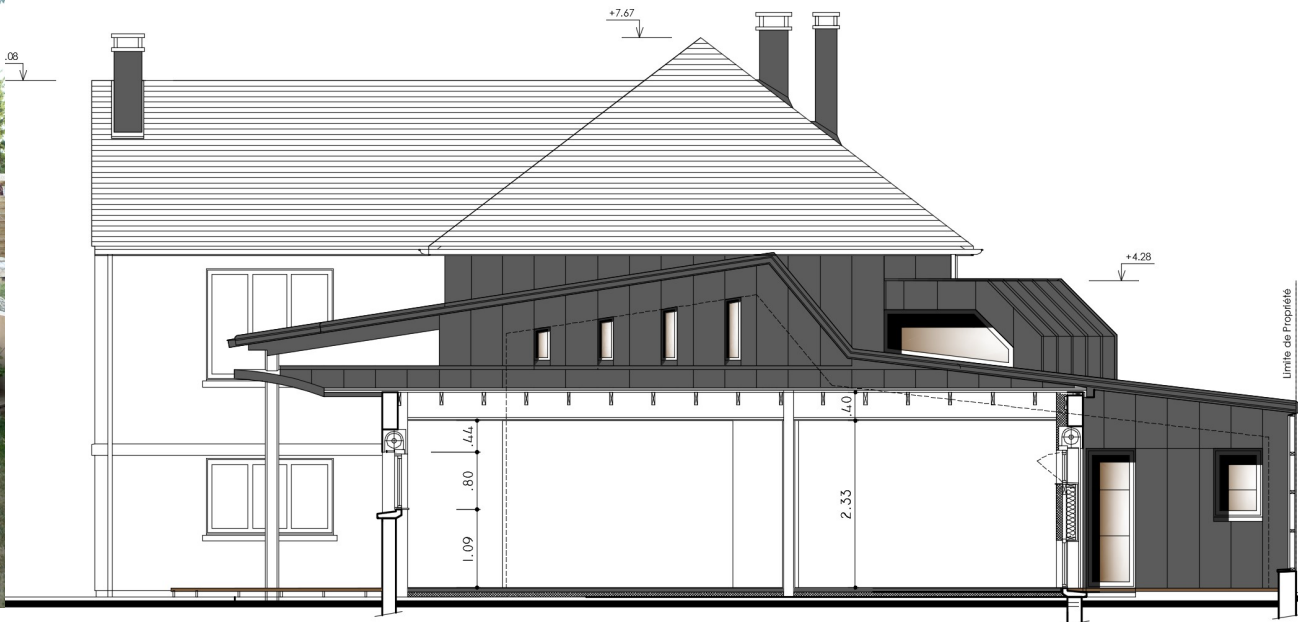
Immeuble Logements Locatifs

Bailleur Social — Restructuration après Incendie



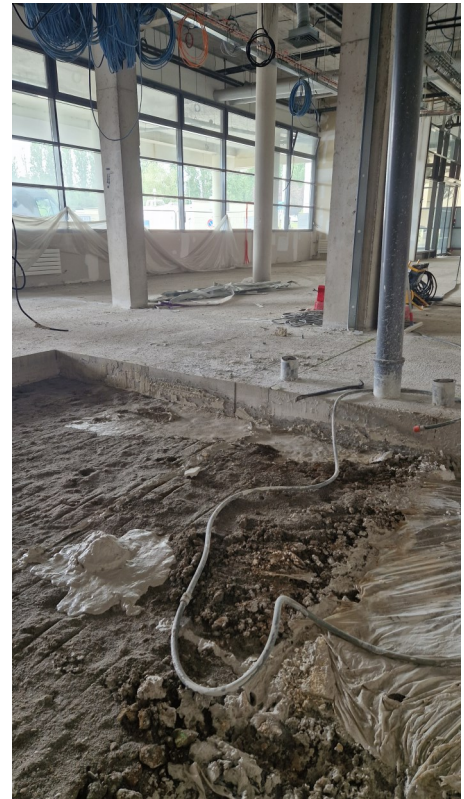
Habitation Individuelle

Particuliers à Laval — Extension-Restructuration



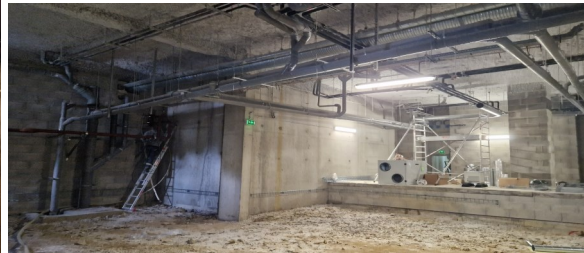
Maison Individuelle

Particuliers — Extension Restructuration

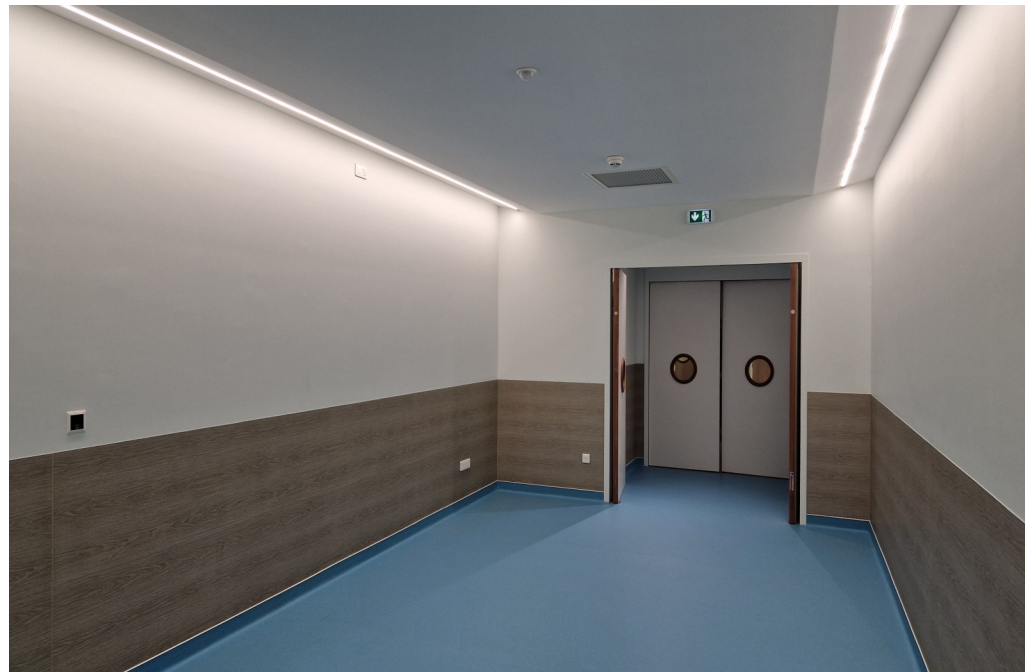
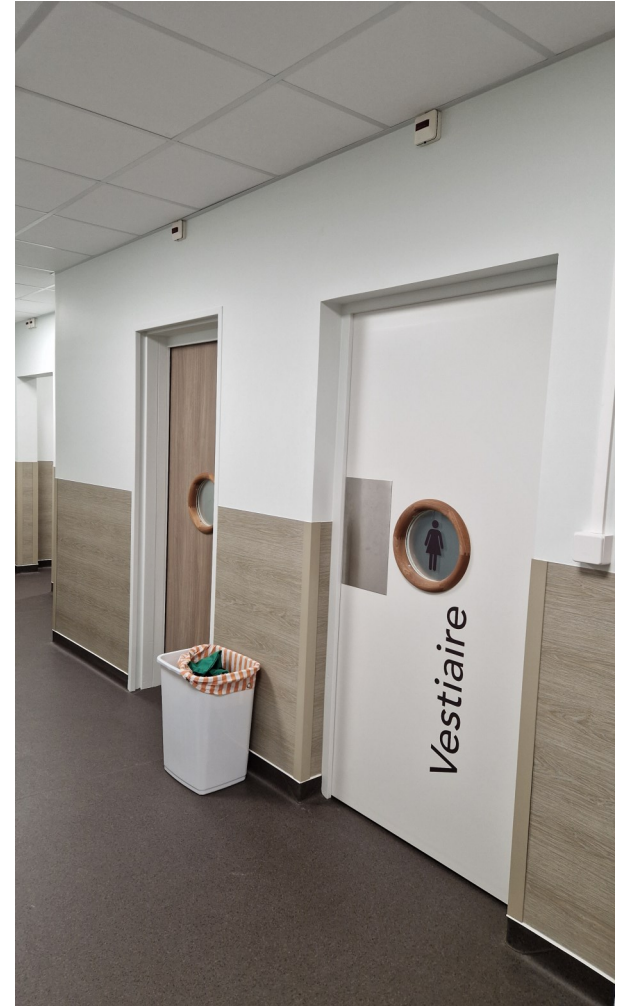


IRM—CH Laval

Friche Hospitalière—Création d'un Service Imagerie Médicale



Centre Hospitalier de Laval — IRM 2



Code Rouge — CH Laval

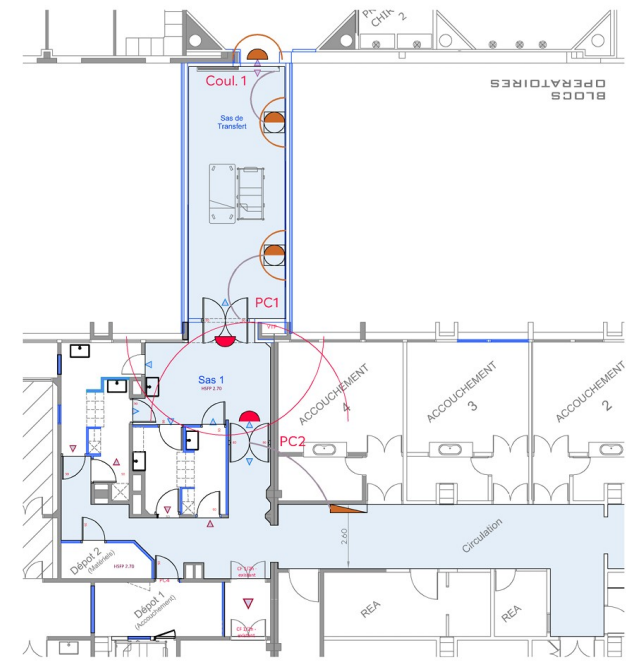
Urgences Natalité

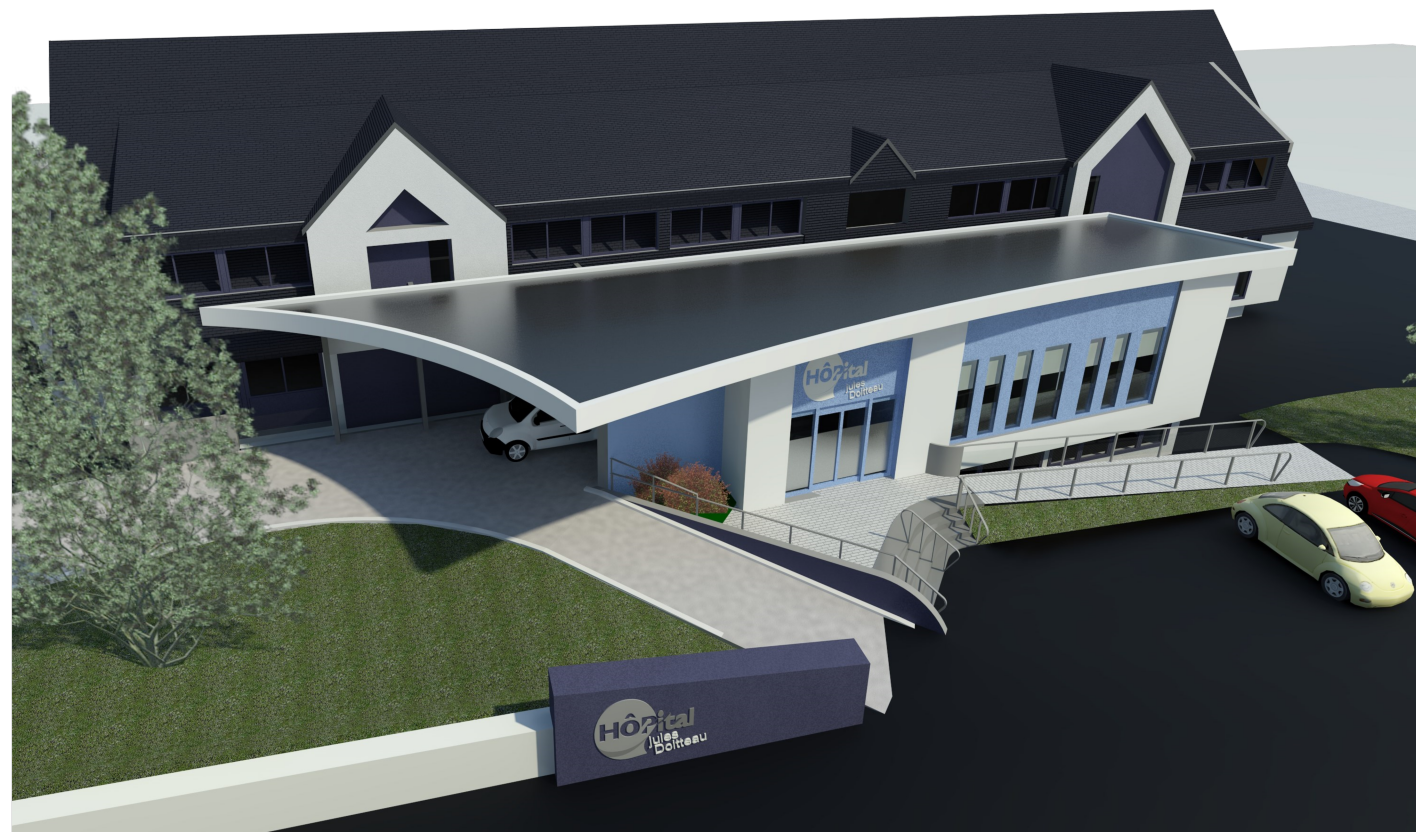
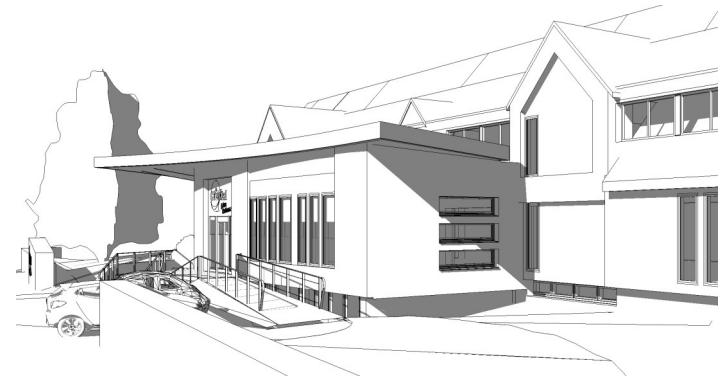


PORTES MOTORISEES PC2 + PC1 + Coul.1
Scénario 2

- Légende**
-  Détection radar sur porte (sensibilité 1m)
 -  Détection radar sur porte (sensibilité 2m)
 -  Détection radar sur porte (sensibilité 4m)
 -  Détection déportée radar mural (sensibilité 1m)
 -  Commande déportée Commande au coude ou radar (sensibilité 0.20m)

Nota : Vitesse d'ouverture des portes = 3 Secondes





Centre Hospitalier de Villaines-La-Juhel — Requalification des Accueils

2024 - Santé—Aménagement—



Atelier Mermoz—15 rue Jean Mermoz—53960 Bonchamp—N. VICTOR architecte dplg—L. DELAUNE assistante associée
06.72.73.25.50 - architectes@atelier-mermoz.fr